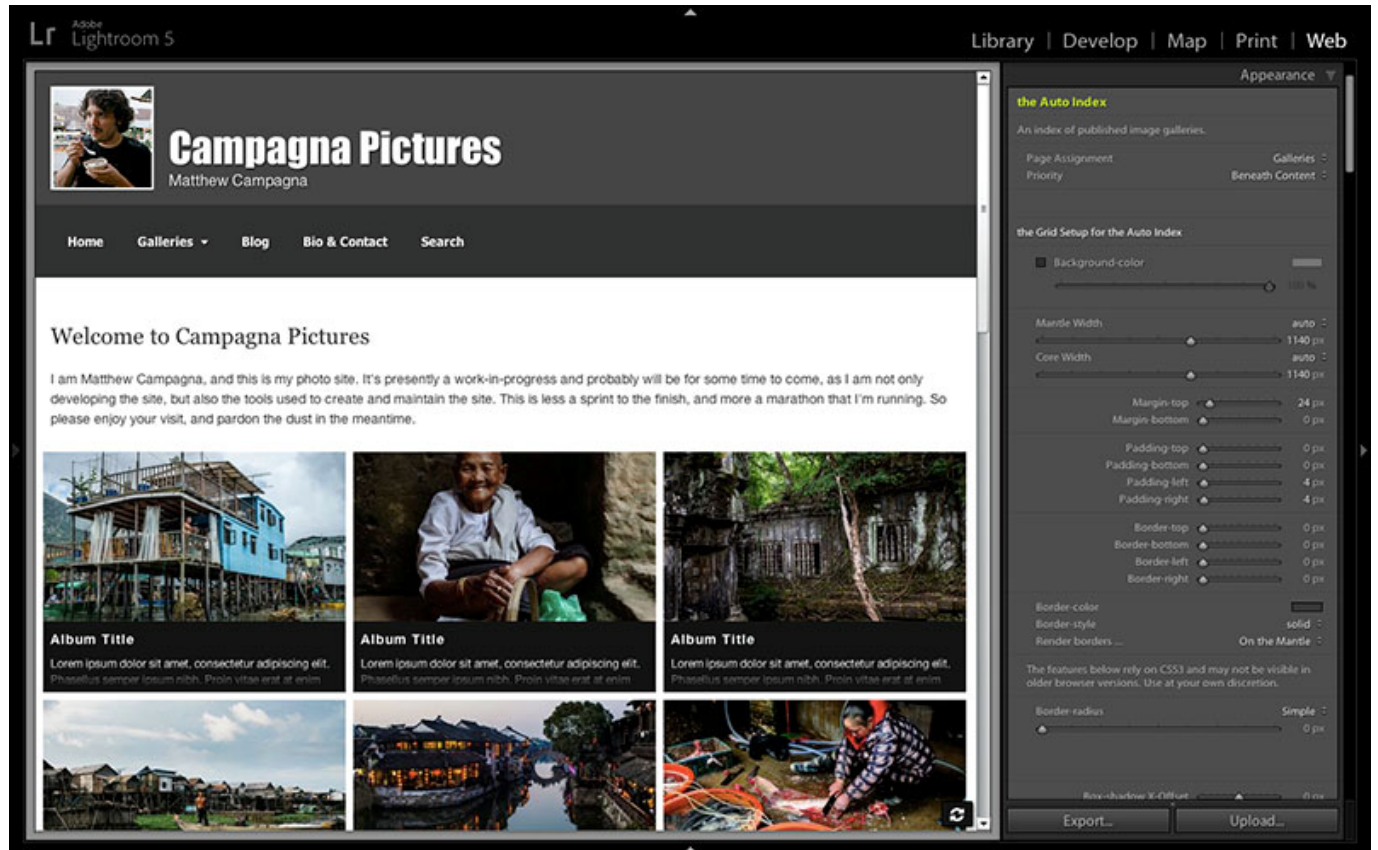


the Auto Index

The Auto Index creates a table-of-contents for image galleries published to the /galleries/ folder, making those galleries navigable from a central location. By default, the Auto Index is assigned to appear on the Galleries page.



Several layouts are available for the auto index; above, you can see the “Iconic” layout. You may change and customize the grid layout in the Appearance pane, under “the Auto Index” (pictured below).

The images appearing on the page within the Lightroom preview are from the filmstrip and are used as stand-in images to provide you a visual aid while designing your page. When you export and upload to your website, the page will be empty until you upload real image galleries to the /galleries folder or via CE4 Publisher. The page will then populate automatically with your image galleries.

The auto index in CE4 Pages is modified from CE4 Auto Index. For more information about how that operates, please cross-reference the CE4 Auto Index documentation.

the Auto Index

An index of published image galleries.

Page Assignment Galleries ⇅
 Priority Beneath Content ⇅

the Grid Setup for the Auto Index

Background-color [Color Picker]

100%

Albums Setup for the Auto Index

Background-color [Color Picker]

100%

Background-color :hover [Color Picker]

100%

Color [Color Picker]
 Color :hover [Color Picker]

Border [Color Picker]

0 px

Auto Index type : desktop Iconic ⇅

Iconic

Large, iconic thumbnails set to a custom width and height. You will probably want to create custom thumbnails for this.

Aspect Ratio

16 / 9

Album Columns 3

Album Info Height 75 px

Album Spacing (even value) 8 px

Album Info Title and Description ⇅
 Display Album Info No

From:
<http://ce4.theturninggate.net/docs/> - **CE4 Documentation**

Permanent link:
http://ce4.theturninggate.net/docs/doku.php?id=ce4_pages_auto_index

Last update: **2014/07/08 03:31**



